

Solar Garden Light User Manual



Product Parameters:

Solar Panel: Polysilicon 2V 0.2W

Battery: Ni-MH battery 1.2V 300mAh

LED: Warm white/Cold white/RGB LED 1 pc

Material: ABS

Charging Time: 8 hours

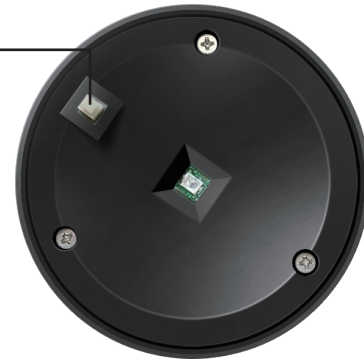
Lighting Mode: Constant Lighting

Lighting Time: 15 Hours

ON/OFF: At the back of the solar panel

Instructions for use:

Light switch



Tips:

1.Unlock and activate the solar lamp:

The internal battery is locked for safety reason during delivery, so user should press the ON/OFF button to unlock it.

2.How to install the lamp?

Please switch on the lamp, assemble the lamp with spike, plant the spike in the ground.

3.Charge the solar panel

Face the solar panel to the sun directly to make sure it gets adequate sunshine, avoid any obstructions or dust. Generally it can be fully charged one day under good sunshine.

4.Light sensor function

Light turns on at night or in darkness, and turns off in daytime or bright area automatically.

Attention:

- 1.Charge the lamp at least 8 hours under the sun when use it the first time.
- 2.The lamp has light control function, it will turn off under bright area.
- 3.The lighting time of the lamp depends on the brightness and range of irradiation of the sunlight, please be aware of the charging time each day.
- 4.Please make sure no obstructions on the solar panel and avoid installing at bright place at night.
- 5.Do not open the charging part if you are not a professional technician in case any damage to the lamp.